

March Economic Monitor

2015

Andrew Burge
Research Officer
York, North Yorkshire and East Riding
Local Enterprise Partnership
andrew.burge@businessinspiredgrowth.com
01609 533578 / 07976035028



National Economy

- In the UK, unemployment fell by 102,000 to 1.86 million in the three months to the end of January
- The number (seasonally adjusted) of people claiming Jobseeker's Allowance in February fell by 31,000 to 791,200, its lowest level since 2008, the ONS said.
- The employment rate now stands at 73.3%, the highest rate of people in work since the ONS began keeping records in 1971.
- The ONS said the number of 16 to 24-year-olds out of work fell by just 12,000 in the three months to January, to 743,000 - a rate of 16.2%.
- The economy grew by 0.6% in the final three months of 2014, up from the previous estimate of 0.5%.
- The unexpected increase meant growth for the year was 2.8%, higher than the earlier estimate of 2.6%.



National Economy



- Including bonuses, average earnings rose 1.8% compared with a year earlier. Slower than last months annual rise of 2.1%
- Excluding bonuses pay rose by 1.6%,
- It means earnings continue to outstrip consumer price index (CPI) inflation, which official figures showed fell to a record low of 0% in February.
- Inflation lowest since records began

Source: [Office for National Statistics – Labour Market Statistics March 2015](#)
[– Consumer Price Inflation March 2015](#)
- BBC News (Graphic)

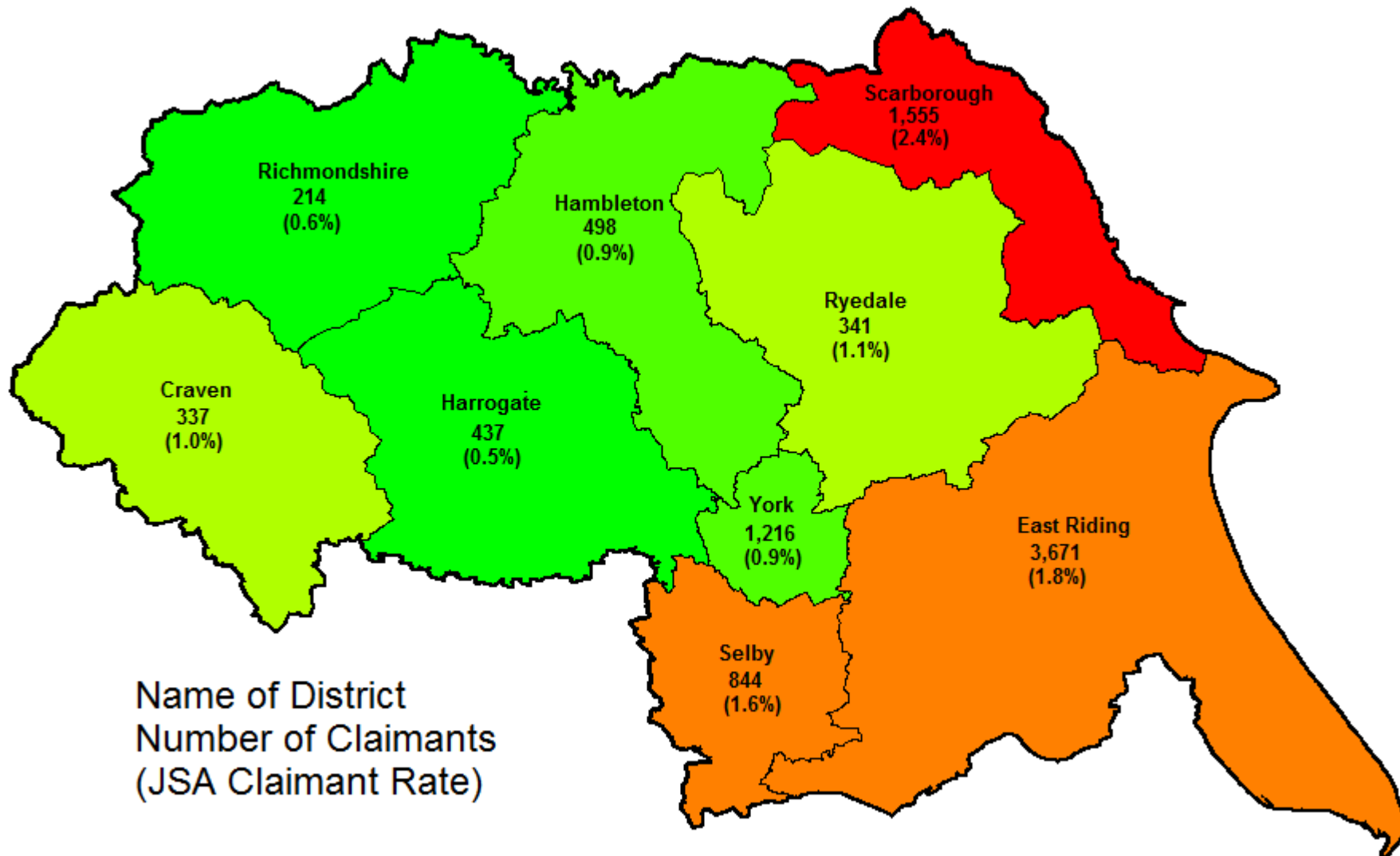


Local Economy

JSA Claimants

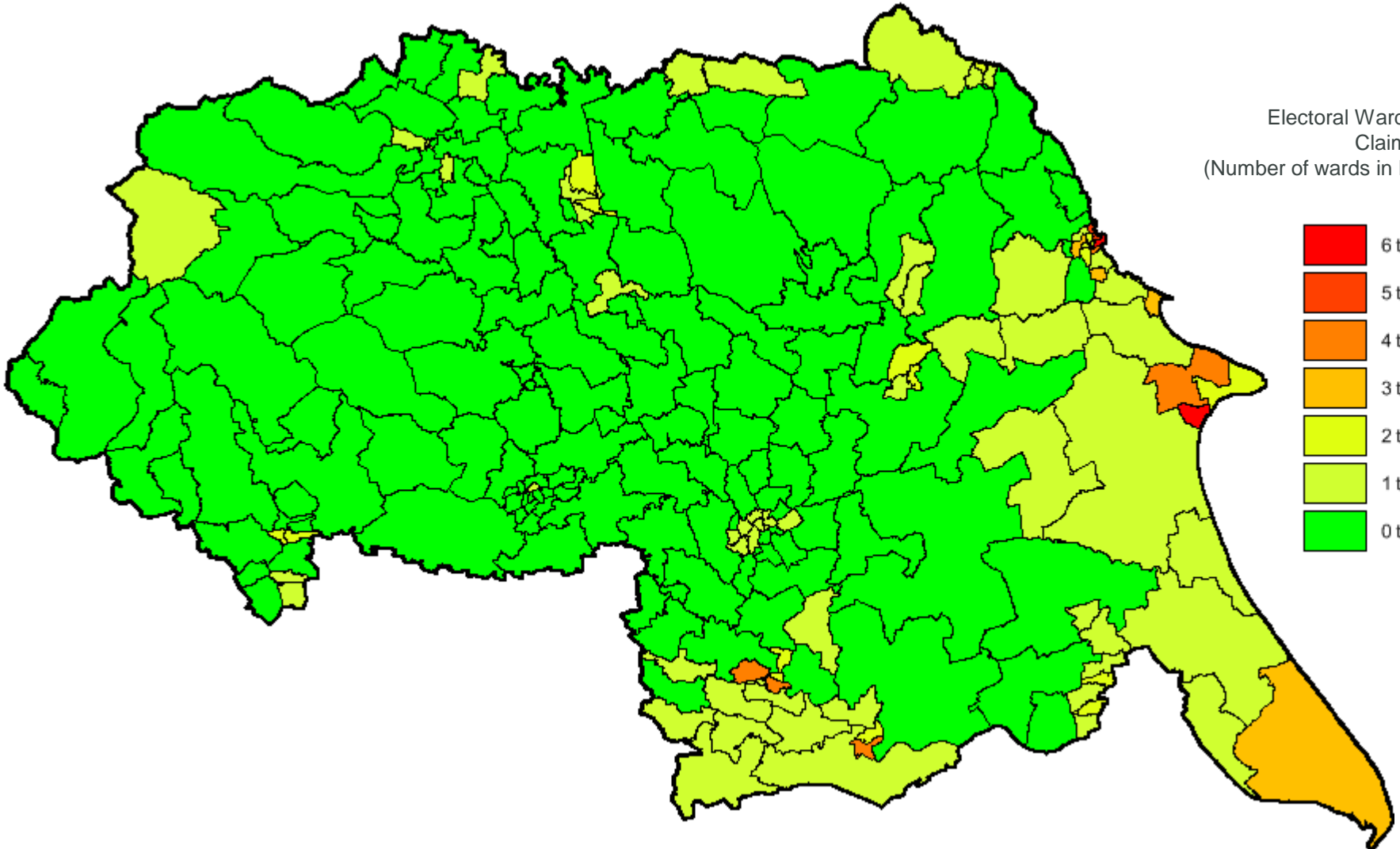
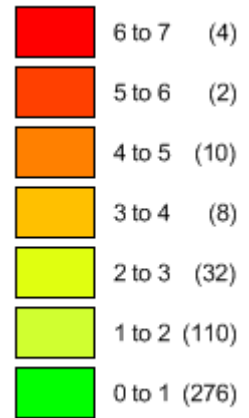
- Currently 9,113 people claiming JSA in the LEP.
- Monthly fall of 20 claimants
- Rate remained at 1.3% of working age population (UK = 2.3%).
- Number of claimants fell in Craven (-1), East Riding (-64), Harrogate (-30) and Scarborough (-15). First January to February fall in coastal districts since pre-recession.
- Number of claimants rose in Hambleton (+18), Richmondshire (+28), Ryedale (+4), Selby (+36) and York (+4).
- Interestingly, Richmondshire has the highest rate of sanctions per 100 claimants in the country (15.4) with Hambleton also in the top 10 (10.9)

Job Seekers Allowance Claimant Rate by District in February 2015



Job Seekers Allowance Claimant Rate by Ward in February 2015

Electoral Wards by JSA
Claimant Rate
(Number of wards in Brackets)

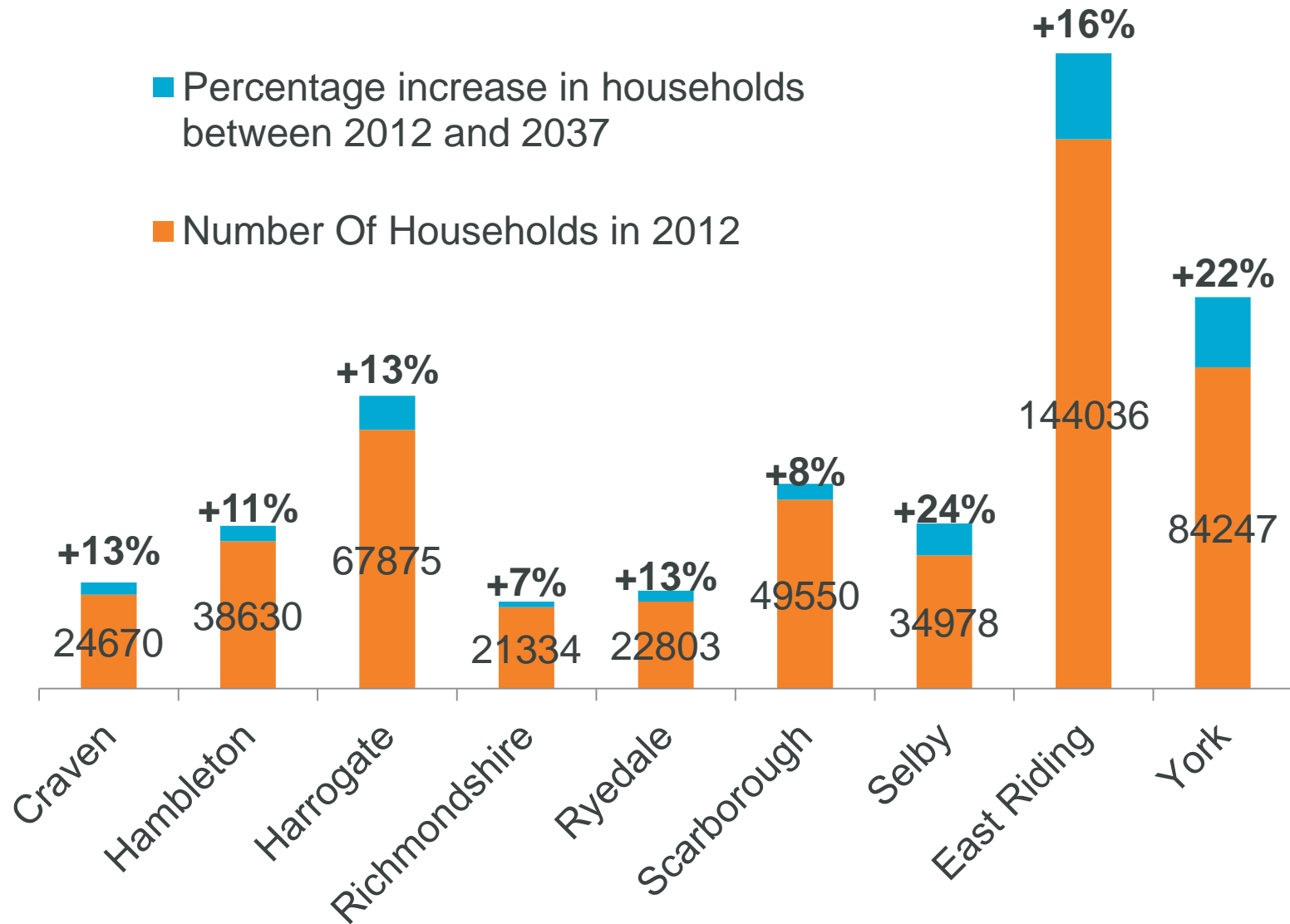


Housing



- Predicting Housing needs and growth “not an exact science” (DCLG Planning Guidance)
- Current rates of house-building are not at the level that household projections predict.
- See BBC article for view on [Why can't the UK build 240,000 houses a year?](#)
- The more Urban Districts of York and Selby show the strongest projected household growth followed by East Riding and Harrogate.

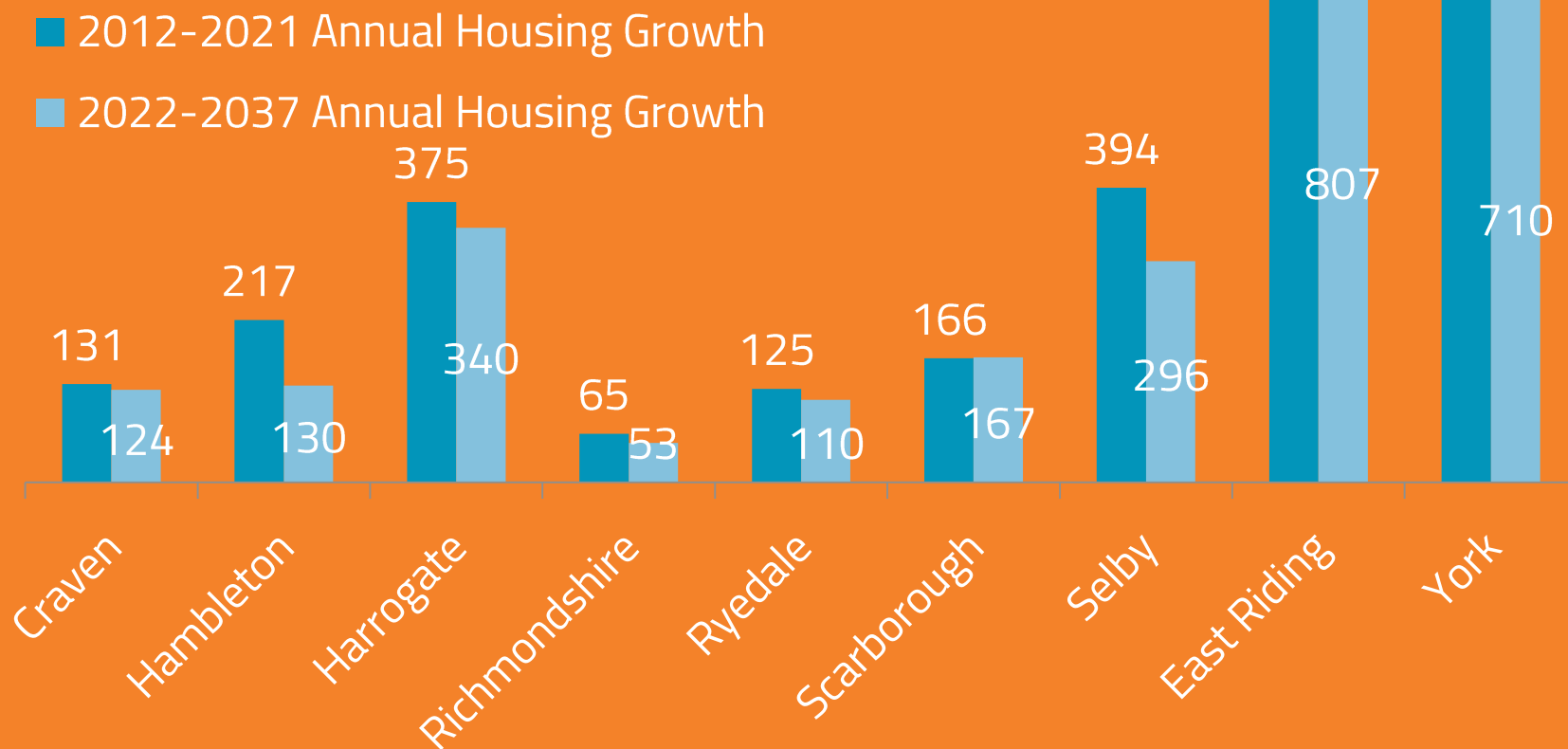
Household Projections



Source: [2012-based household projections \(Office for National Statistics\)](#)

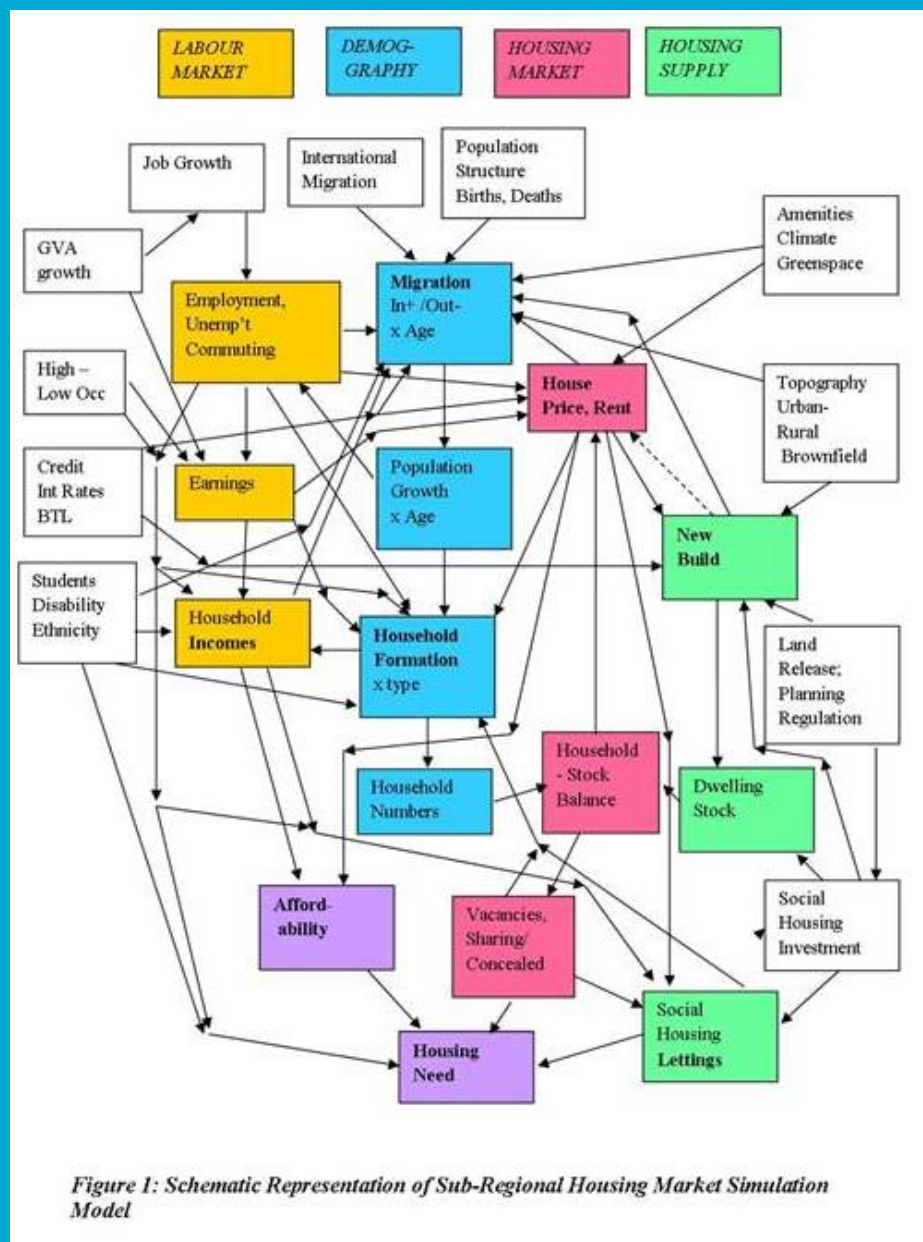
Annual Household Growth

(Shows the likely average annual increase in number of houses between 2012-2021 and 2022-2037 based on current trends)

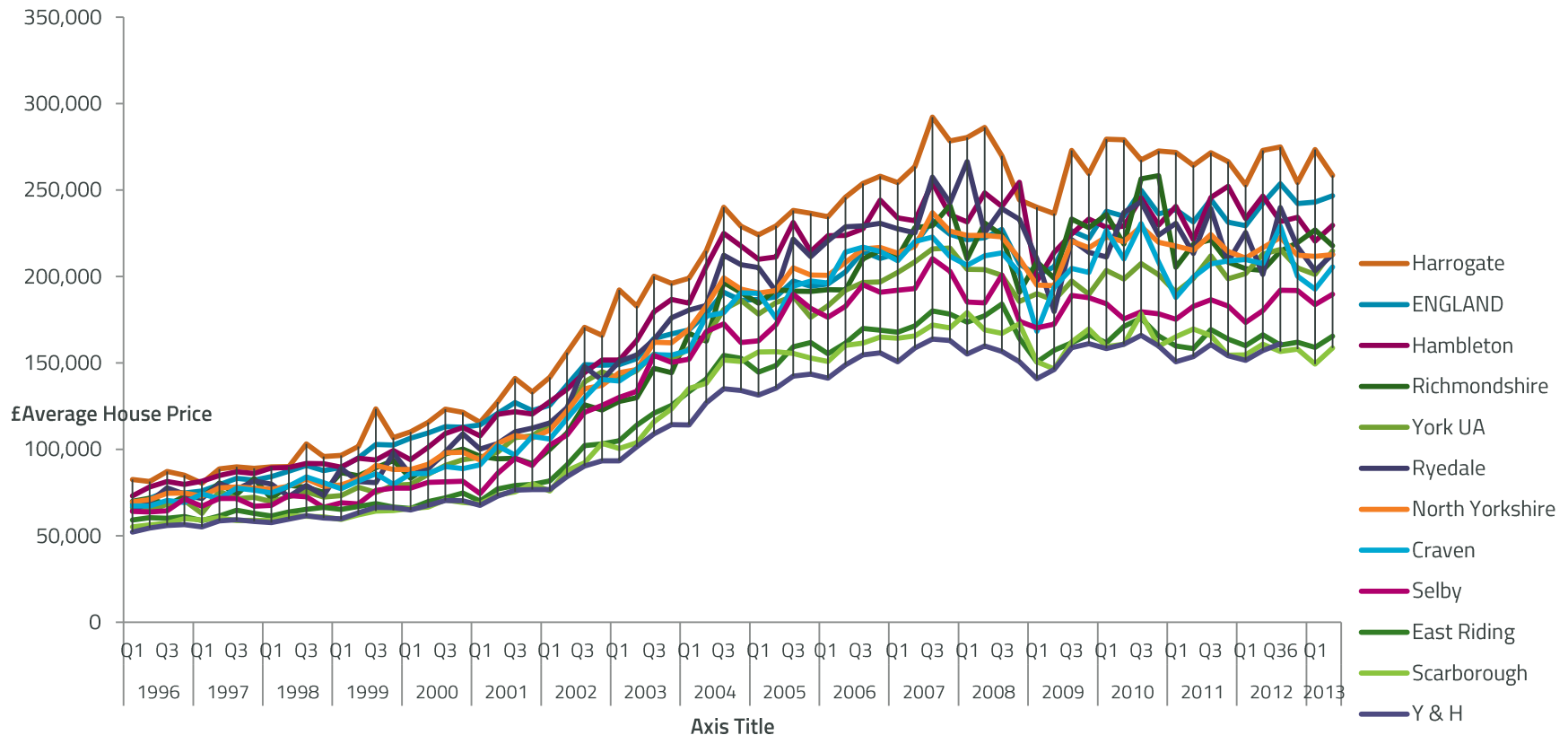


Household Projections

- Household projections are not an assessment of housing need or do not take account of future policies, they are an indication of the likely increase in households given the continuation of recent demographic trends
- Household projections provide a baseline for assessing housing need but the housing market is a complex system with many factors effecting need.
- Some statistics around some of these factors are provided in the following slides.



Average House prices in the Districts of the LEP between 1996 and 2012

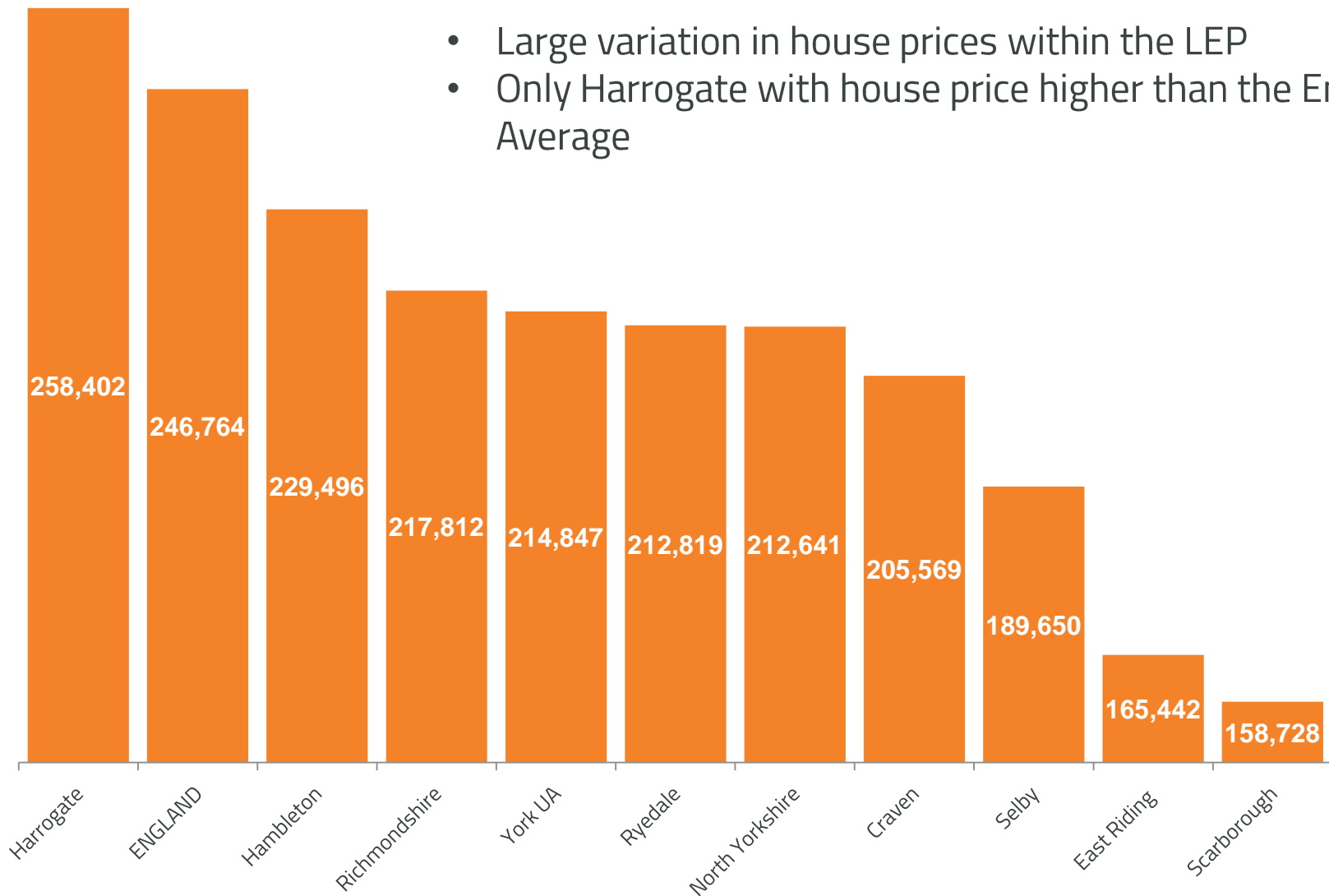


The gap between the cheaper houses of Scarborough and East Riding and the more expensive houses of Harrogate has grown over time.

Mean house prices rose up until 2008 and then fell sharply. This fall was biggest in districts with the most expensive housing. By 2010 they had mostly recovered and have since remained fairly constant.

Average House prices in the Districts of the LEP (2nd quarter 2013)

- Large variation in house prices within the LEP
- Only Harrogate with house price higher than the England Average



House Prices

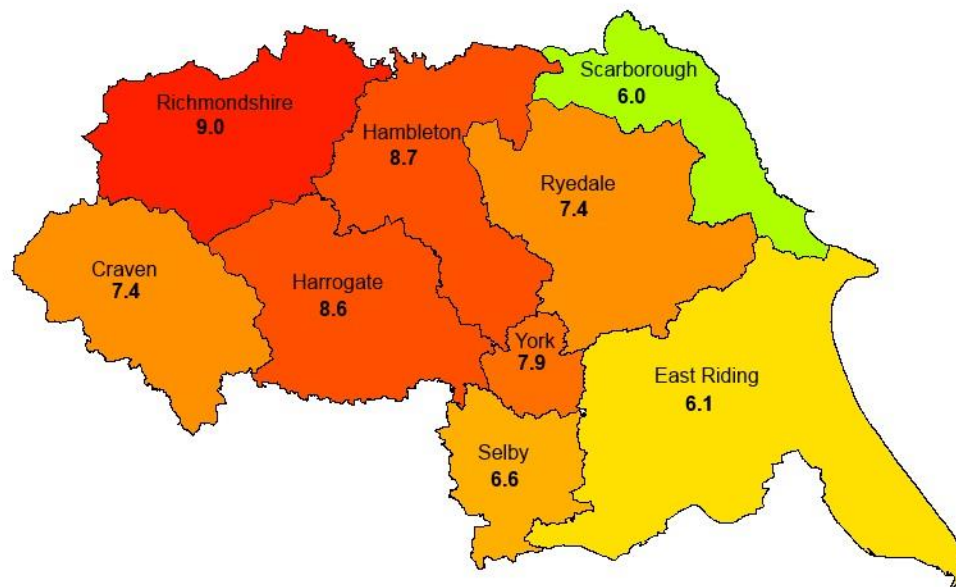
More recent data shows strong annual house price growth in York of 8.0%. More than Double North Yorkshire and East Riding rates of 3.4% and 3.7% respectively in the 12 months till February 2015.



Affordability

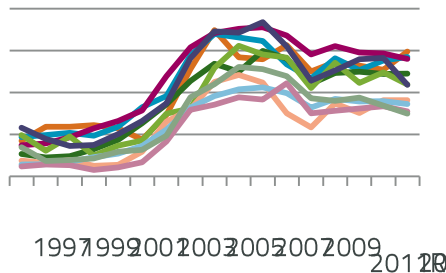
House Price Affordability in England and the York, North Yorkshire and East Riding LEP in 2013

Ratio of lower quartile earnings to lower quartile house prices



Sources: Annual Survey of House and Earnings, Land Registry Data

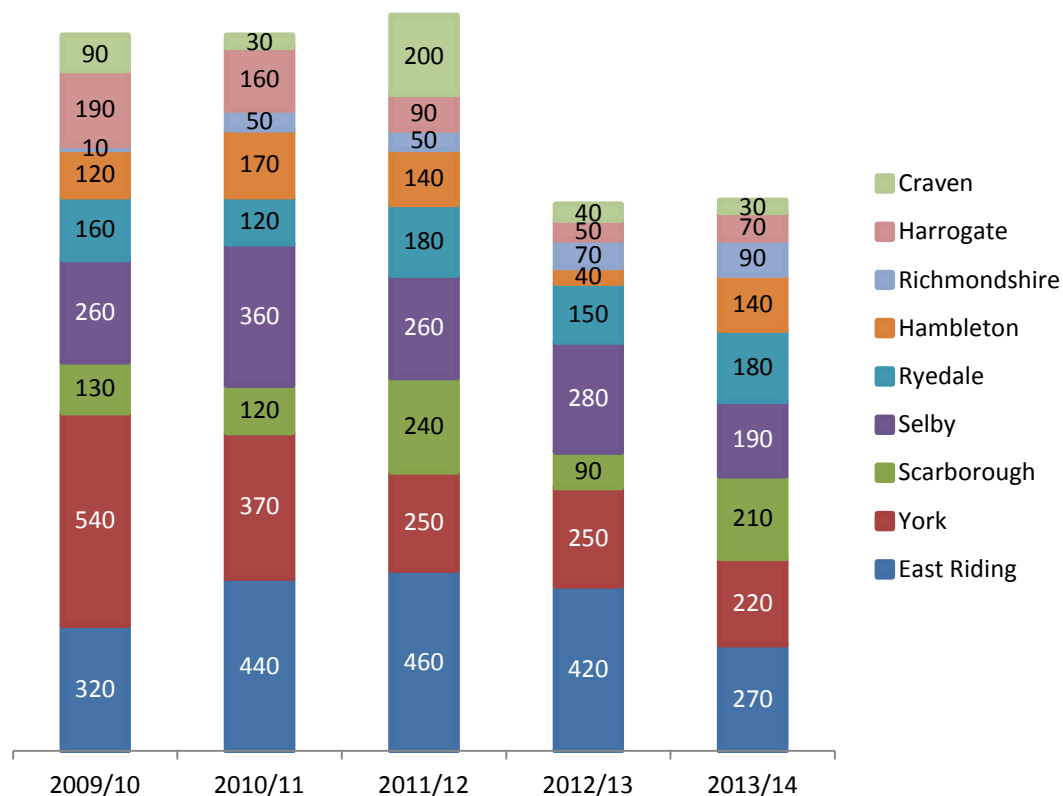
- North Yorkshire has some of the least affordable housing in the north of England.



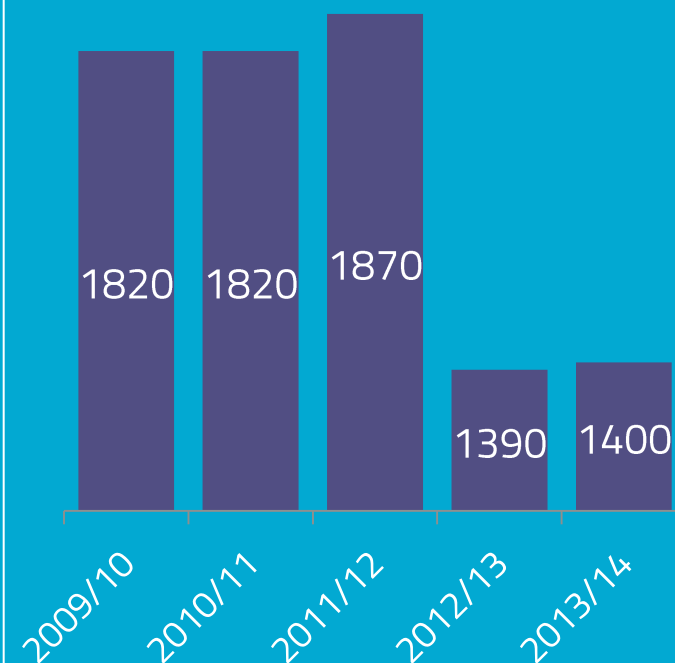
Affordability Ratios Peaked before the recession, fell in 2008/9 as house prices fell and have been fairly constant since (data is between 1997 and 2013)

House Building

**Housing Completions in the LEP since 2009/10
by district**

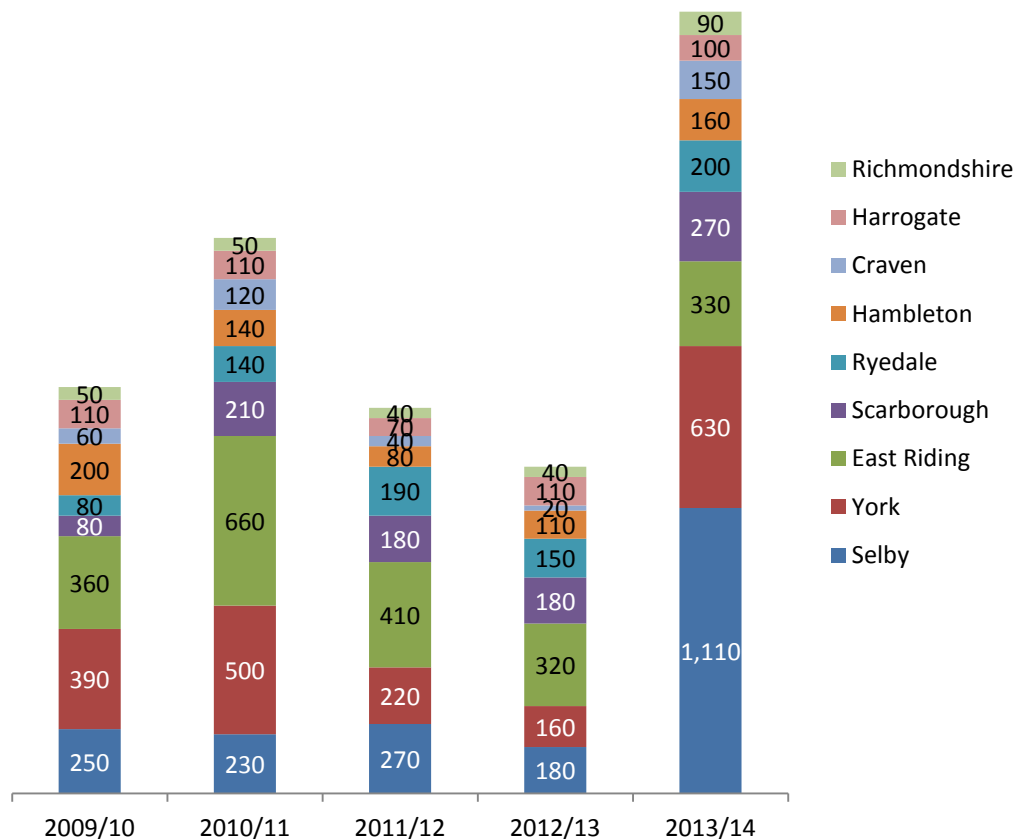


**Houses Completed in the
LEP
2009/10 to 2013/14**

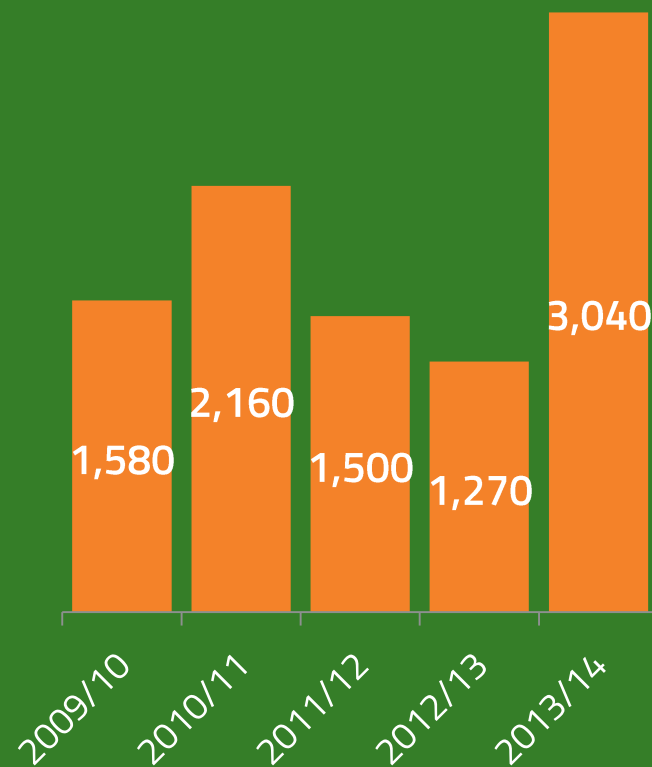


House Building

Houses Started in the LEP since 2009/10 by District



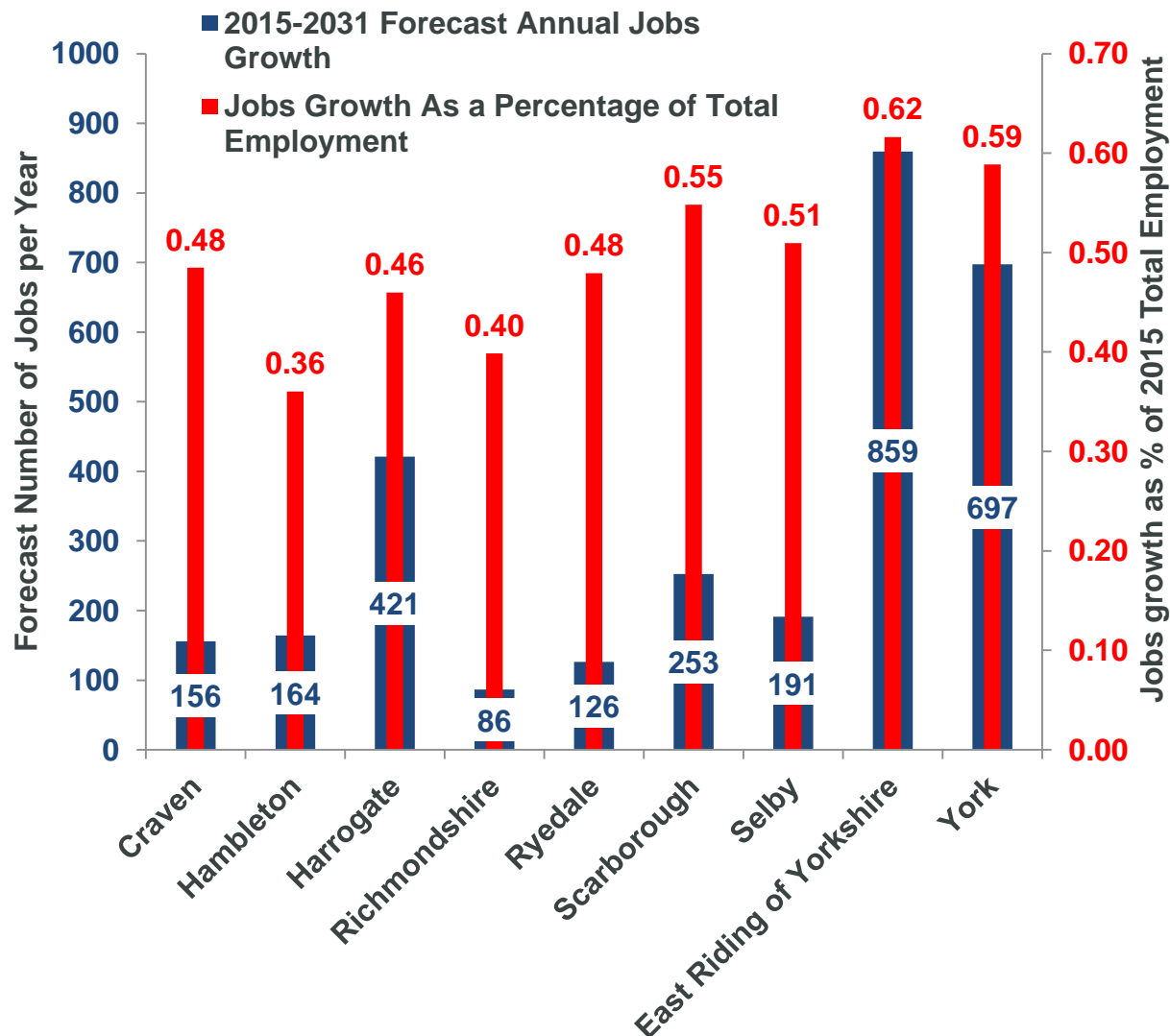
**Houses Started in the LEP
2009/10 to 2013/14**



Employment Forecasts

- Employment forecasts show the most likely scenario predicted by an econometric model
- An econometric model is a model based on historic trends and an estimation of a future picture where those trends or similar trends continue
- This inherently leaves employment forecast data open to fluctuations in the economy not widely forecast along with continual updates as the current picture of the economy changes
- It should also be noted that employment forecasts attempt to show projections of employment in a given area. This alone does not show the number of people in the given area that will work in those jobs, as this would require the inclusion of in and out commuting within the area
- Therefore despite employment forecasts being a useful tool in estimating future housing need, estimated job creation or loss should not stand alone, but be part of a framework to produce an overall future housing need assessment

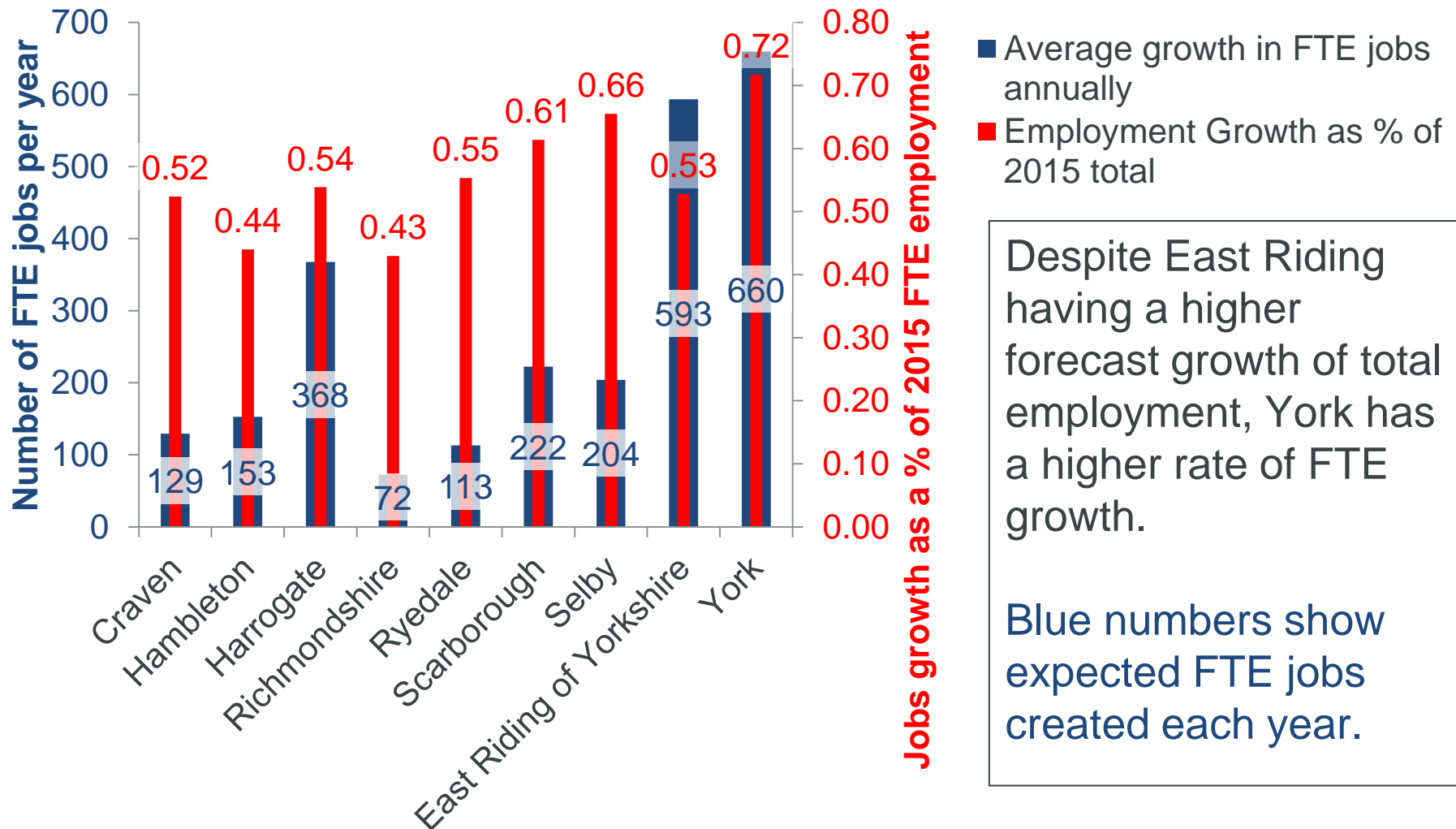
Econometric Modelling of Annual Growth in Total Employment- 2015-2031 Average



Forecast jobs growth is stronger in East Riding and York and Weakest in Hambleton and Richmondshire.

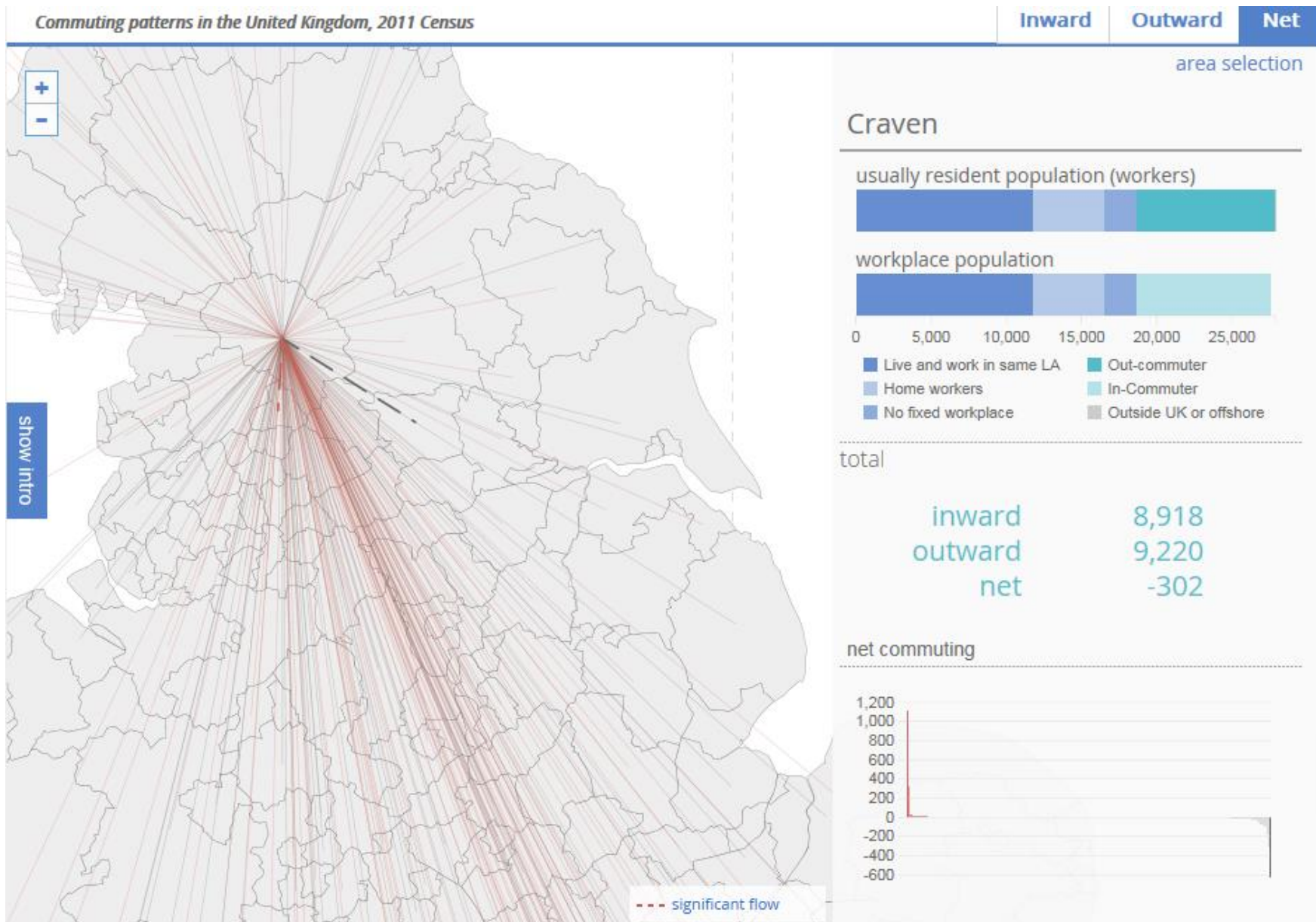
The blue numbers show the numbers of new jobs expected to be created each year.

Econometric Modelling of Annual Growth in FTE Employment- 2015-2031 Average

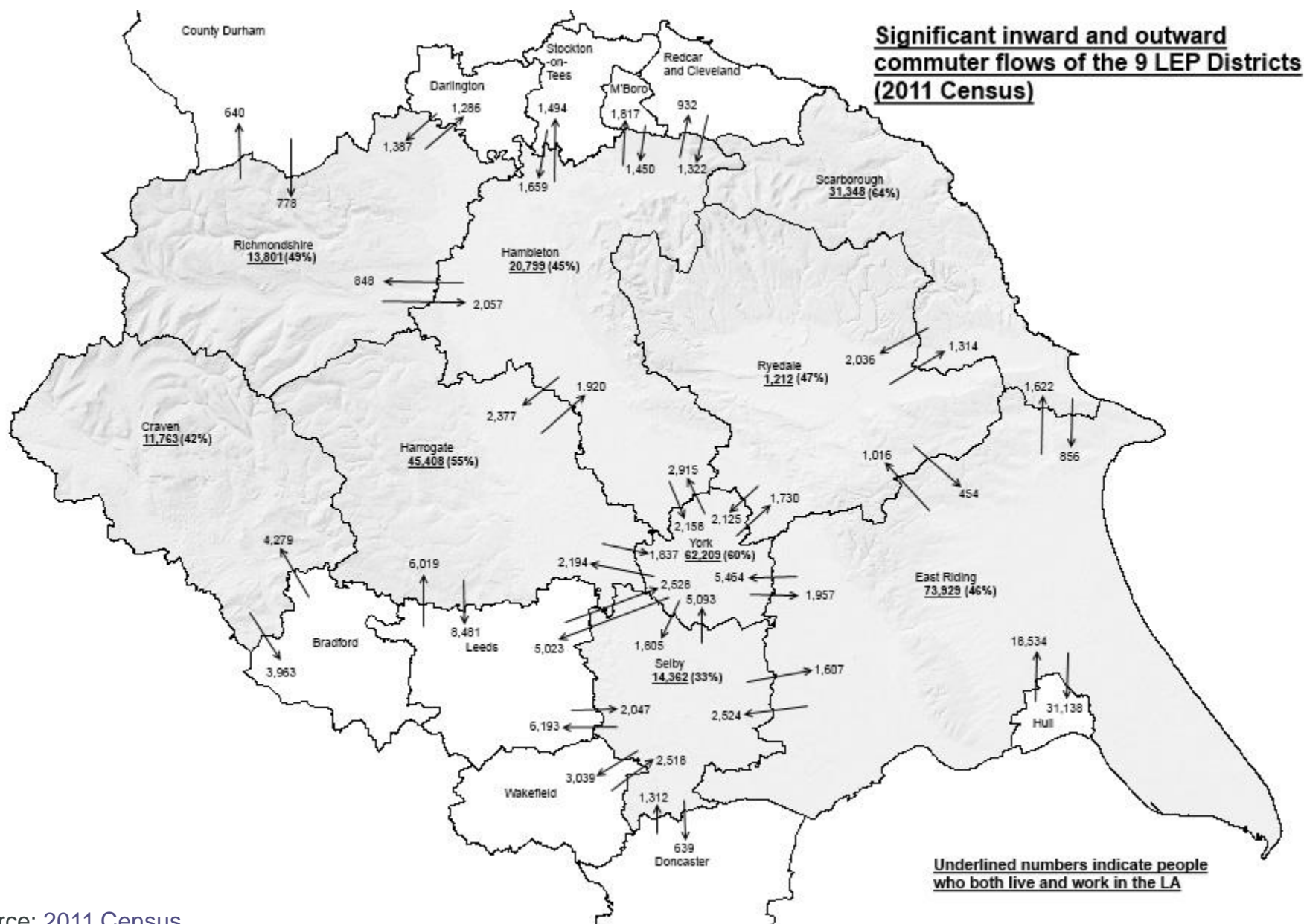


Commuting patterns

← Open Hyperlink for different LA

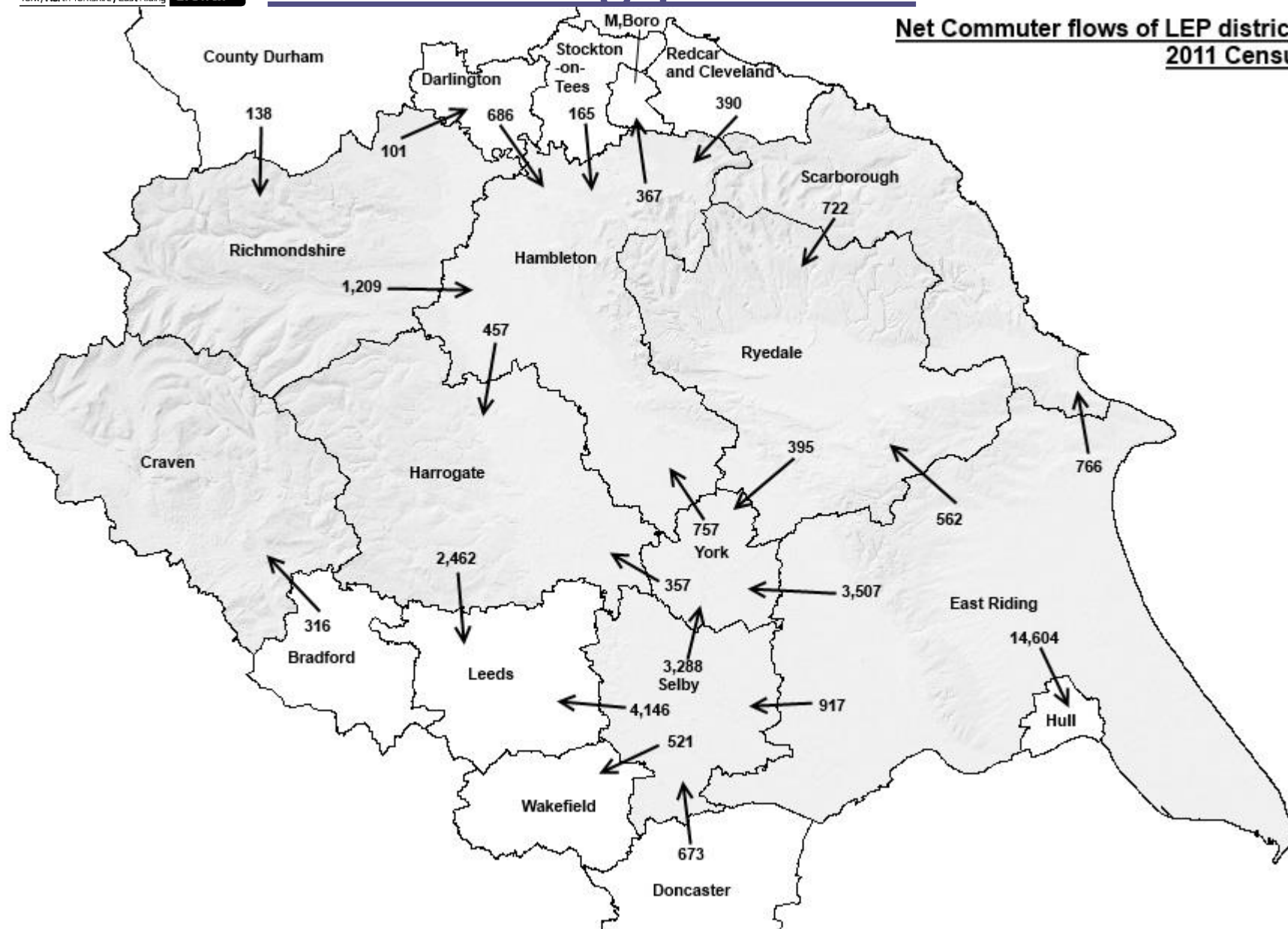


Commuting patterns



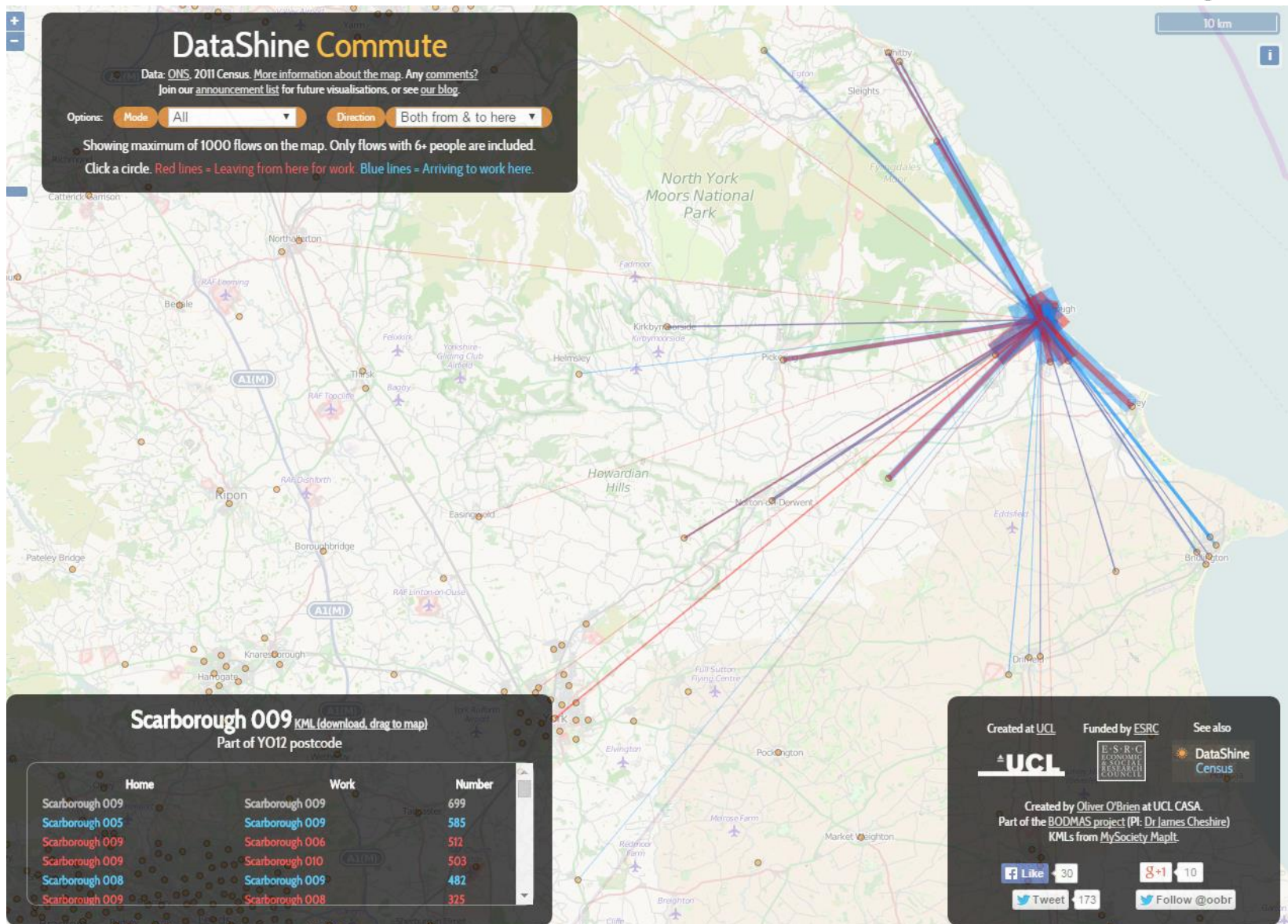
Commuting patterns

**Net Commuter flows of LEP districts
2011 Census**

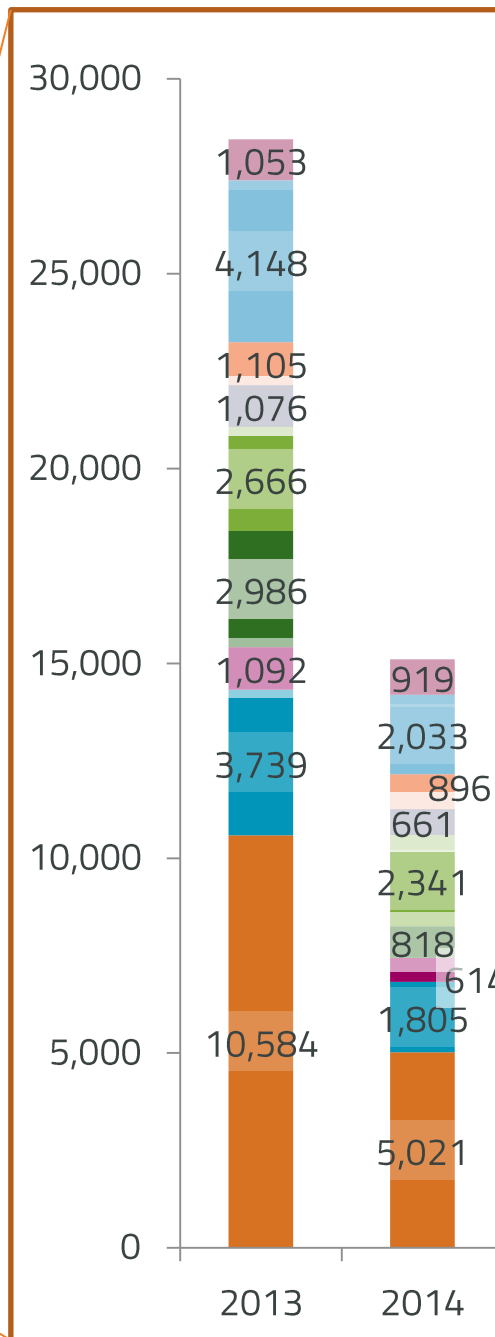
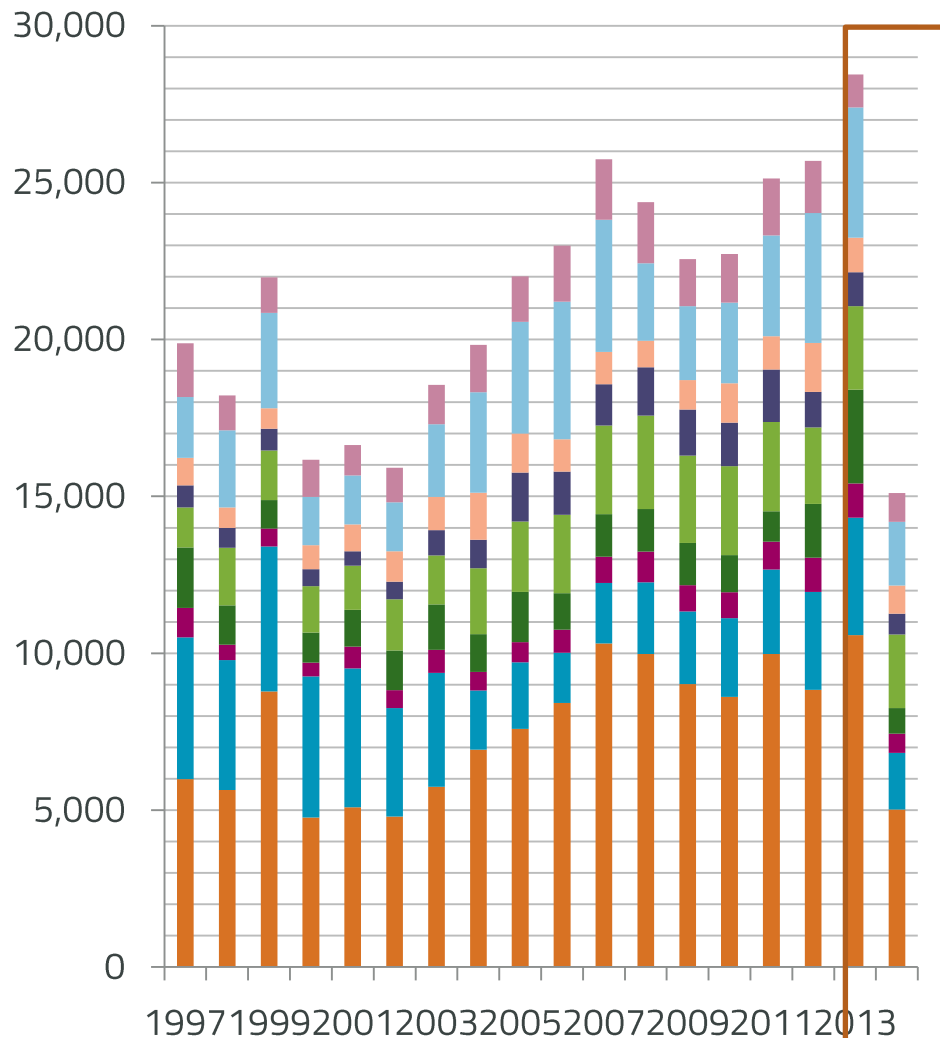


Commuting patterns

← Open Hyperlink for small area commuting patterns

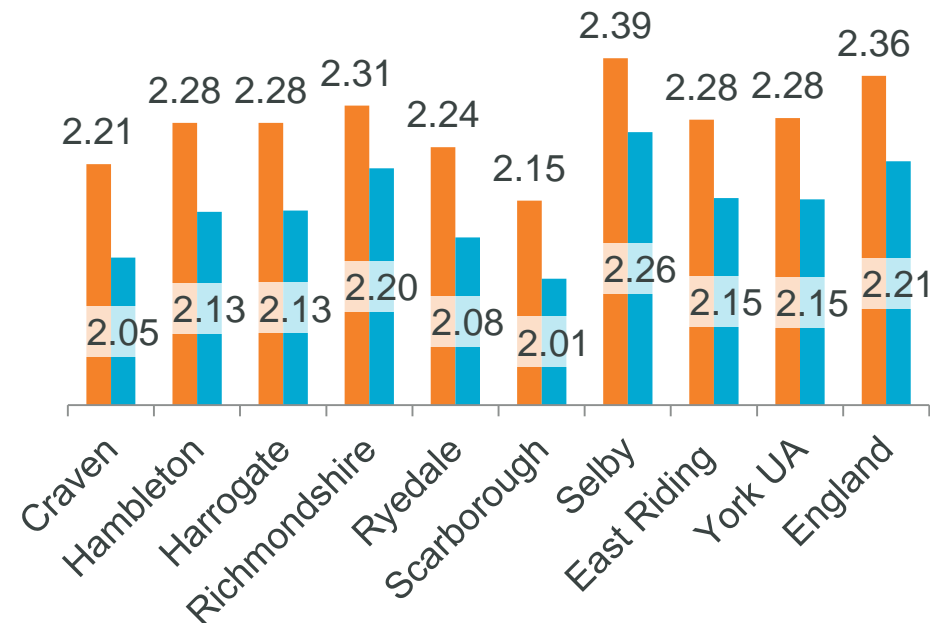


Number of households on LA's housing waiting lists



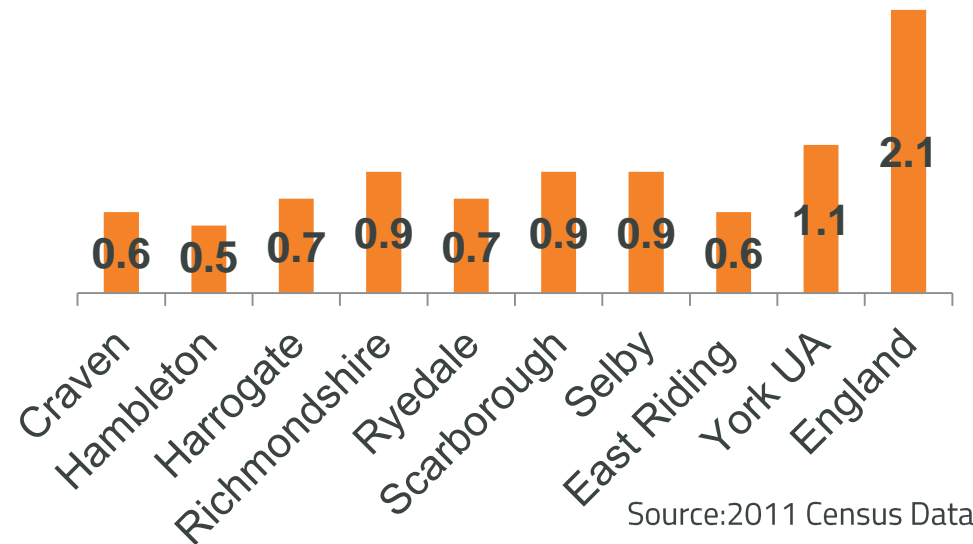
Houses in the LEP are less crowded than nationally with more rural districts having less people per room

Average Household Size (People)



Over Crowding

Percentage of Households with More than 1 person per room



Source: 2011 Census Data

Household size is also smaller than nationally with the exception of Selby. Scarborough's households are the smallest in the LEP

Rents

Rents in 2014: Private Registered Provider (PRP) weekly rents by district



Source: DCLG

Private Rental Market Statistics between 1 Apr 2013 to 31 Mar 2014 (Monthly Rent)



Large variation in the cost of renting a property within the LEP

Changes will impact significantly on commuting flows.

Variation is less dramatic amongst PRPs

Renting in Harrogate 83% more expensive than renting in Scarborough